

PACIFIC PRODUCTS&ND SERVICES.

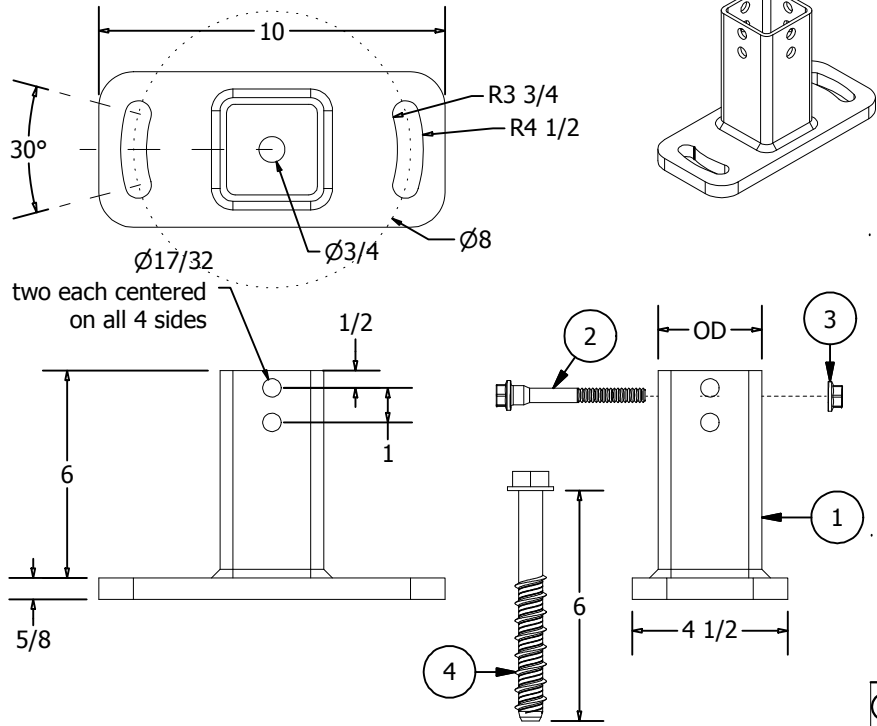
Highland, CA 92346 (909) 864-6570

*Do not scale drawing-work to dimensions
 *All tolerances +/- .1/64" unless otherwise noted
 *Unit of Measure - inches

PREPARED FOR:
DOT

BILL OF MATERIALS

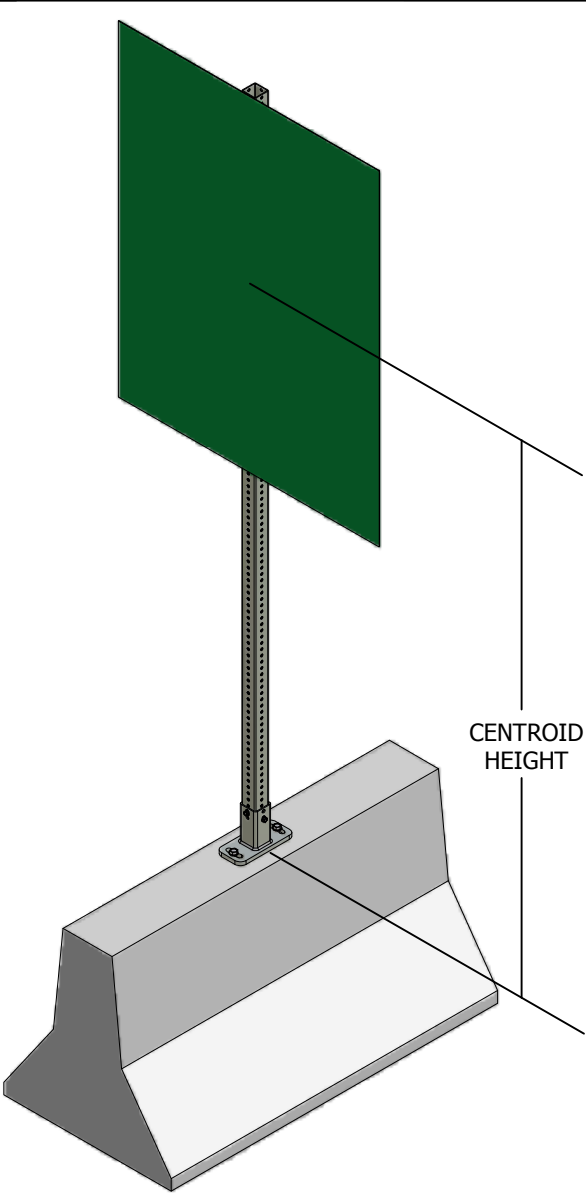
(1)	CBM45-12-25S-G	1 each of	Receiver for 2" sq. post; gal. ASTM A153
(1b)	CBM45-12-3S-G	1a or 1b	Receiver for 2-1/2" sq. post; gal. ASTM A153
(2)	G8FSB38-35-Z	2 each	3/8"-16 x 3-1/2" GR.8 FLNG Shoulder Bolt
(3)	G8FN38-Z	2 each	3/8"-16 GR.8 Serrated Flange Nut
(4)	WB58-600-Z	2 each	Wedge Bolt 5/8" x 6" threaded - orange tip



MATERIALS:

1. Post Receiver Socket made from 7 ga ASTM A500 Grade B tube.
 Post Receiver Base Plate made from 5/8" thick ASTM A572 plate steel.
2. Shoulder Bolt is SAE J429 zinc coated to ASTM B633.
3. Flange Nut is SAE J995 zinc coated to ASTM B633.
4. Wedge Bolt is case hardened carbon steel zinc coated to ASTM B633.

RECEIVER OD / GA	POST SIZE	SIGN AREA CAPACITY	MAX CENTROID
2-1/2" / 7ga	2"x12ga	12 sq. ft.	8-3/4 ft.
3" / 7ga	2-1/2"x12ga	18 sq. ft.	9-1/4 ft.
3" / 7ga	2-1/2"x10ga	24 sq. ft.	8-1/4 ft.



- A. INSTALLATION MUST BE ON A MINIMUM OF 3000 PSI CONCRETE BARRIER.
- B. DRILL TWO HOLES CENTERED ON BARRIER AND 8" APART USING A 5/8" STANDARD ANSI DRILL BIT MEETING THE REQUIREMENTS OF ANSI STANDARD B212.15.
- C. SECURE BARRIER MOUNT BRACKET TO CONCRETE BARRIER USING TWO THREADED WEDGE ANCHOR BOLTS.
- D. INSERT POST INTO BARRIER MOUNT BRACKET AND SECURE POST USING TWO FLANGE SHOULDER BOLTS AND NUTS, PERPENDICULAR TO EACH OTHER. SIGN PANEL CAN BE ATTACHED TO THE SIGN POST BEFORE OR AFTER SIGN POST IS INSTALLED.
- E. DRIVE RIVETS OR ALUMINUM SIGN BRACE MAY BE USED TO ATTACH SIGN PANEL TO THE SIGN POST.
- F. PRODUCT MUST BE ACCEPTED BY THE STATE DOT, AND MUST BE DESIGNED TO CURRENT AASHTO & FHWA REQUIREMENTS.

FINISH Hot Dip Galvanize per ASTM A123	DESCR-PTION Indexable Concrete Barrier Mount for Square Steel Post	DWG# DWG#	Revision Original	Date 6-12-14	Description of Revision (Supersedes Previous Drawing)
DRAWN BY					
WEIGHT					