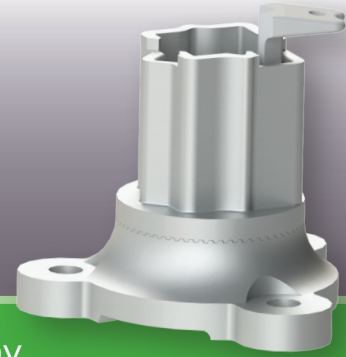




# TELESPAR® OMNI-BREAK™



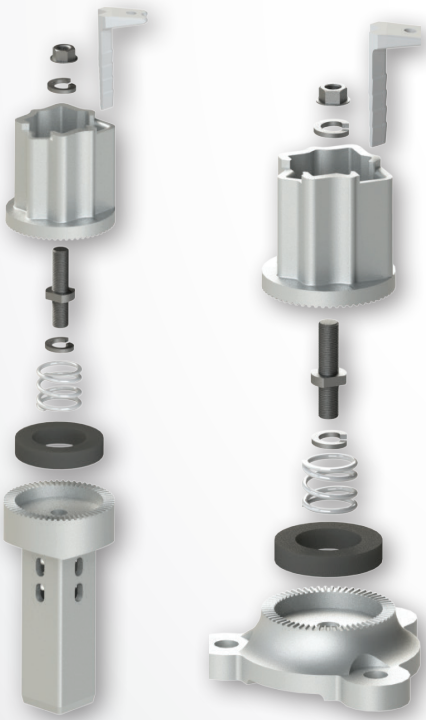
Telespar is proud to introduce the Omni-Break™ breakaway system, designed to allow sign posts to safely break away after impact, protecting passengers from potentially dangerous situations.

Tested and passed to MASH regulatory standard, the Omni-Break™ allows sign installations to be FHWA compliant.

Compatible with 1.75" and 2" square posts, Telespar now offers a comprehensive product line for your sign post installation needs.

## Features and Benefits

- Compliant with new MASH Standard
- Easy installation and replacement
- Designed so that after impact the only system component needing replacement is the shear bolt, keeping replacement costs low
- Surface mount and in ground anchor options are available
- Indexing capabilities allow for proper sign orientation after the base is installed



In-Ground Anchor Mount Kit

Surface Mount Kit

Part Number	Description
191000	Surface Mount Kit (Hardware Included)
191001	In-Ground Anchor Mount Kit (Hardware Included)
Replacement Parts	
191002	Shear Bolt
191003	Compression Spring