

BAND-IT®

ENGINEERED FASTENING SOLUTIONS

POLE AND TOWER MOUNTING SOLUTIONS

BAND-IT offers a complete line of pole and tower mounting solutions for municipal, telecommunications, wireless infrastructure and similar applications.

Use BAND-IT stainless steel banding, buckles, and unique installation tools to attach almost anything to a pole!

BAND & BUCKLE



MOUNTING HARDWARE & BRACKETS



INSTALLATION TOOLS



Find our product offerings for pole mounting solutions on the following pages.

www.band-it-idex.com

ESSENTIALLY EVERYWHERE

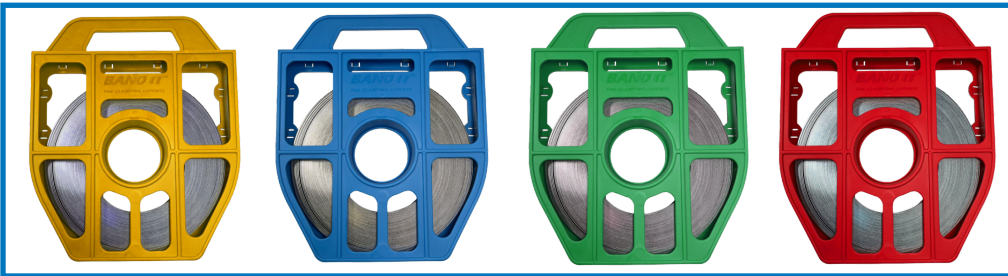
BAND-IT® BAND: 201 STAINLESS STEEL BAND

PART NO.	MATERIAL	WIDTH (IN)	THICKNESS (IN)	AVERAGE BREAKING STRENGTH (LBS)	PACKAGE QUANTITY	WEIGHT (LBS)
C20499	201 SS	1/2	0.030	1500	100'/Roll	5.1
C20599	201 SS	5/8	0.030	1875	100'/Roll	6.4
C20699	201 SS	3/4	0.030	2250	100'/Roll	7.7



201 STAINLESS STEEL BAND TOTES

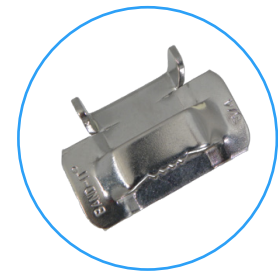
PART NO.	MATERIAL	WIDTH (IN)	THICKNESS (IN)	AVERAGE BREAKING STRENGTH (LBS)	PACKAGE QUANTITY	WEIGHT (LBS)
C203Y9	201 SS	3/8	0.025	900	100'/Roll	3.6
C204B9	201 SS	1/2	0.030	1500	100'/Roll	5.5
C205G9	201 SS	5/8	0.030	1875	100"/Roll	6.8
C206R9	201 SS	3/4	0.030	2250	100'/Roll	8.2



Use BAND-IT totes for convenient carrying to installations in the field.

BAND-IT® BUCKLE: EAR-LOKT STYLE

PART NO.	MATERIAL	WIDTH (IN)	PACKAGE QUANTITY	WEIGHT (LBS)
C25399	201 SS	3/8	100/Box	0.8
C25499	201 SS	1/2	100/Box	2.1
C25599	201 SS	5/8	100/Box	2.4
C25699	201 SS	3/4	100/Box	3.7

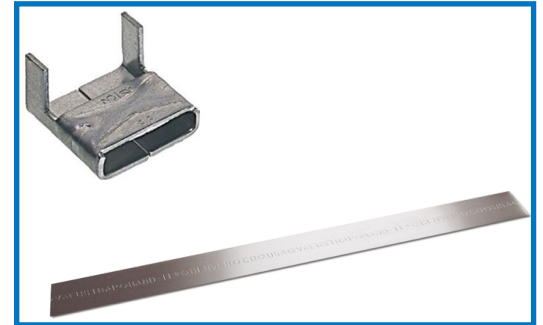


VALU-STRAP™ Plus

PART NO.	MATERIAL	WIDTH (IN)	THICKNESS (IN)	AVERAGE BREAKING STRENGTH	PACKAGE QUANTITY	WEIGHT (LBS)
C19199	200/300 SS	3/8	0.02	637	100'/Roll	2.8
C18189	200/300 SS	1/2	0.02	850	100'/Roll	3.6
C17199	200/300 SS	5/8	0.02	1000	100'/Roll	4.5
C16189	200/300 SS	3/4	0.02	1275	100'/Roll	5.4

STAINLESS STEEL VALUCLIP

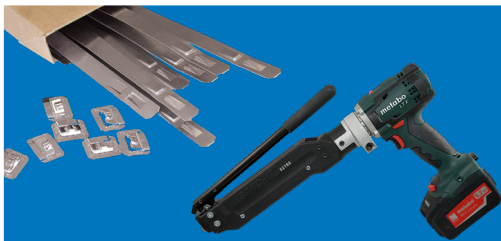
PART NO.	MATERIAL	WIDTH (IN)	PACKAGE QUANTITY	WEIGHT (LBS)
C15399	200/300 SS	3/8	100/Box	0.6
C15499	200/300 SS	1/2	100/Box	1.1
C15599	200/300 SS	5/8	100/Box	1.2
C15699	200/300 SS	3/4	100/Box	2.1



C00169



BAND-IT's standard tool for use on band widths of 1/4" to 3/4" (.015" - .030" thickness). Drop forged tool with built in cutter, spring loaded gripper lever improves ease of use. For use on band widths from 1/4" to 3/4".



ULTRA-LOK® PREMIUM BANDING SYSTEM

Designed for quick installation, highest clamping force and gap-free inside diameter. The best choice for harsh duty applications!

ULTRA-LOK BAND

PART NO.	MATERIAL	WIDTH (IN)	LENGTH (IN)	THICKNESS (IN)	MAX DIA. SINGLE WRAP (IN)	MAX DIA. DOUBLE WRAP (IN)	PACKAGE QUANTITY	WEIGHT (LBS)
UL1018**	201 SS	1/2	18	0.030	3	NOT SUGGESTED	50/Box	4.1
UL1024**	201 SS	1/2	24	0.030	5	2.5	50/Box	5.3
UL1032**	201 SS	1/2	32	0.030	7	3.5	50/Box	7.2
UL1046**	201 SS	1/2	46	0.030	11	5.5	25/Box	5.9
UL1070**	201 SS	1/2	70	0.030	18	9	25/Box	8.5
UL1096**	201 SS	1/2	96	0.030	25	12.5	25/Box	11.2
UL1116**	201 SS	1/2	116	0.030	31	15.5	25/Box	13.3
UL2024	201 SS	3/4	24	0.030	5	NOT SUGGESTED	25/Tote	4.1
UL2032	201 SS	3/4	32	0.030	7	3.5	19/Tote	4.3
UL2036	201 SS	3/4	36	0.030	8	4	33/Tote	8.2
UL2044	201 SS	3/4	44	0.030	11	5.5	27/Tote	8.2
UL2048	201 SS	3/4	48	0.030	12	6	25/Tote	8.2
UL2052	201 SS	3/4	52	0.030	13	6.5	23/Tote	8.2
UL2060	201 SS	3/4	60	0.030	15	7.5	20/Tote	8.2
UL2068	201 SS	3/4	68	0.030	17	8.5	17/Tote	8.2
UL2076	201 SS	3/4	76	0.030	20	10	15/Tote	8.2
UL2084	201 SS	3/4	84	0.030	22	11	14/Tote	8.2
UL2092	201 SS	3/4	92	0.030	24	12	13/Tote	8.2
UL2120	201 SS	3/4	120	0.030	32	16	10/Tote	8.2
UL2150	201 SS	3/4	150	0.030	41	20.5	8/Tote	8.2
UL2175	201 SS	3/4	175	0.030	48	24	6/Tote	8.2

** 1/2" Bands will require M09387 for UL4000-D Tool.

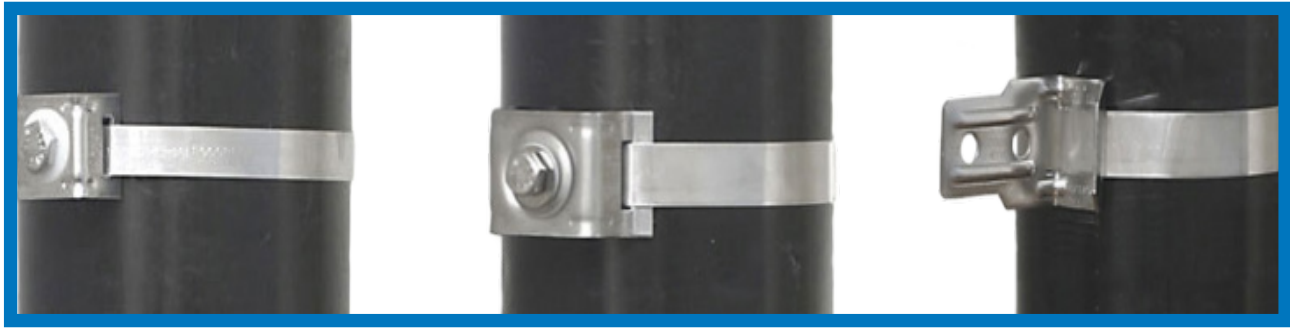
3/4" width band lengths 36" or longer in 100' Totes; 34" or less in 50' Totes.

ULTRA-LOK BUCKLE

PART NO.	MATERIAL	WIDTH (IN)	PACKAGE QUANTITY	WEIGHT
UB2549	201 SS	1/2	100/Box	2.4
UB2569	201 SS	3/4	100/Box	3.7



MOUNTING HARDWARE & BRACKETS



MINI BRACK-IT

PART NO.	DESCRIPTION	THICKNESS (IN)	PACKAGE QUANTITY	PACKAGE WEIGHT (LBS)
D31099	Flared leg mini Brack-IT, SS with SS bolt and fibre washer. 1/2" slot.	0.05	50/Box	3
D31599	Straight leg mini Brack-it, SS with SS bolt and fibre washer. 1/2" slot.	0.05	50/Box	3



SINGLE BOLT FLARED LEG BRACK-IT

PART NO.	DESCRIPTION	THICKNESS (IN)	PACKAGE QUANTITY	PACKAGE WEIGHT (LBS)
D02189	Single bolt flared leg with SS bolt, washer and fibre washer. 3/4" slot.	0.07	50/Box	7



L-MOUNT RIGHT ANGLE BRACK-IT

PART NO.	DESCRIPTION	PACKAGE QUANTITY	PACKAGE WEIGHT (LBS)
D00799	L-Mount right angle Brack-It, 0.070" thick SS, includes tow bolt holes suitable for 5/16" or 1/4" bolts.	50/Box	4.4



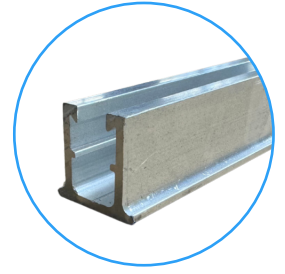
BAND-IT BOLT/CLAMPS

PART NO.	DESCRIPTION	PACKAGE QUANTITY	PACKAGE WEIGHT (LBS)
D50089	Bolt/Clamp. Includes a 3/8 - 16 x 6.0 carriage bolt. Slot will accommodate 3/4" width Giant Band.	50/Box	23.7



CHANNEL EXTRUSION

PART NO.	MATERIAL	DESCRIPTION	PACKAGE QUANTITY	PACKAGE WEIGHT (LBS)
SX0073-20	Aluminum	Medium Channel Extrusion	20/Box	70



CHANNEL CLAMP

PART NO.	MATERIAL	DESCRIPTION	PACKAGE QUANTITY
SX0220-100	SS	Universal Channel Clamp	100/Box



Pacific Products & Services is a specialty traffic product supplier. We carry a full line of traffic products including Telespar post, installation equipment/tools, signage, sign accessories, guardrail, safety apparel, hardware, bollards, and much more. We carry everything needed to create a complete solution so you can finish your job on budget and on time. Our team is experienced and devoted to helping you find exactly what you're looking for, our goal is to serve you!